

## Experience Carefree RV Living

### —Without the RV!

Whether you're looking for a warm place to spend your winters or seeking a great place to retire, Rincon Country West RV Resort in Tucson, Arizona is a premier destination. Not sure if the leisure life of Southern Arizona is right for you? Renting a fully furnished Park Model is the perfect "test drive" to try it out for yourself. We make it easy for you to experience the carefree lifestyle of Tucson.

Appointed with cookware, towels and linen, as well as a microwave, toaster, coffee maker and TV, we've created a fantastic getaway for you! It's the perfect way to enjoy all the comforts of home while enjoying Tucson and Rincon Country.

You'll find our resort to be incredibly welcoming, so you're sure to make lots of new friends quickly. We have so many community activities and events to enjoy, that you'll feel just like family in no time — even if this is your first time visiting Rincon Country or Tucson.

We also feature new and pre-owned Park Models for sale, already in place and ready for immediate occupancy. Be sure to contact us for current availability and to make an appointment to see these terrific values in Rincon Country living.

## Discover What Rincon Country Has to Offer!

- ◇ Heated Pool
- ◇ Hot Tubs
- ◇ Planned Activities
- ◇ Golf and Hiking Clubs
- ◇ Pickleball
- ◇ Bocce Ball
- ◇ Arts and Crafts
- ◇ Sewing and Quilting
- ◇ Free Wifi
- ◇ and so much more!

**Call us today  
and reserve your  
home away from home!**



**RINCON COUNTRY  
WEST**

RV RESORT

4555 S Mission Rd  
Tucson, AZ 85746

Reservations: 800-782-7275

520-294-5608

Fax: 520-294-0303

Website: [www.RinconCountry.com](http://www.RinconCountry.com)

E-mail: [west@rinconcountry.com](mailto:west@rinconcountry.com)



**RINCON COUNTRY  
WEST**

RV RESORT

A 55+ Senior Community

**PARK MODEL**

**RENTAL RATES**

**10/1/24 –9/30/25**

**Reservations:**

800-782-7275

or

520-294-5608

[www.RinconCountry.com](http://www.RinconCountry.com)

Email: [west@rinconcountry.com](mailto:west@rinconcountry.com)

	Standard Park Model- Weekly + Tax	Standard Park Model- Monthly + Utilities	Park Model With Deck- Monthly + Utilities	Park Model With AZ Room- Monthly + Utilities
Jan, Feb or Mar	\$880-\$1000	\$2800-\$2950	\$3150	\$3600
April	\$600-\$680	\$2050	\$2050	\$2150
May, June July, Aug or Sept	\$575*	\$1400*	\$1400*	\$1400*
Oct, Nov or Dec	\$600-\$680	\$2050	\$2050	\$2150

## Security Deposit, Payment and Refund Information

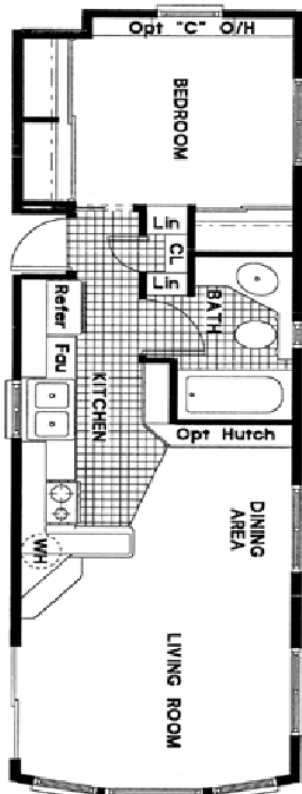
**Security Deposit:** Covers any physical damage which may occur during occupancy. **Monthly:** A deposit of \$1000.00 is required at time of reservation. \$500.00 of this is the Security Deposit. The remaining \$500.00 will go towards the rent upon check in. **Weekly:** A \$500.00 Security Deposit is required.

**The Security Deposit is refunded after your departure by check or credit card.**

**Rental Payment: Monthly reservations:** First and last month's rent is due upon arrival. Any additional rent is due on the first day of the interim months (if applicable.) **Weekly Reservations:** Full payment of reservation is due upon arrival.

**Refunds prior to registration: Monthly reservations:** Upon receipt of written cancellation prior to October 1 before the reserved start date, a refund for the full deposit amount will be issued by mail. After October 1, deposit is forfeited, unless unit can be rented for the canceled period. **Weekly Reservations:** One month's notice required for refund of the full deposit amount. Within one month of the start date, deposit is forfeited, unless unit can be rented for the canceled period.

**Refunds after Reservation Start Date:** 30 days notice required and if unit can be rented for the canceled period, a refund (less \$100.00 cancellation fee) will be issued by mail. Otherwise, the month's rent is forfeited.



Sample Floor plan

### Park models are non-smoking units.

- ◇ Park Model comes fully furnished including cookware, towels and linens.
- ◇ Rates are for two people.
- ◇ Monthly rental begins on the first of the month.
- ◇ Rent includes Wifi\*, water and sewer, cable TV, use of our recreational facilities and participation in our activity program.
- ◇ Electricity and propane gas will be the responsibility of the individual monthly renter.
- ◇ Laundry facilities are available in recreation center.
- ◇ Now offering a limited number of Pet Friendly units for an additional fee. Please inquire.

**Check in: 3:00 p.m.**

**Check out: 9:00 a.m.**

**\*Summer rates do not include Wifi.**  
DSL service available through CenturyLink.  
Please call our office  
for the best phone number to activate.